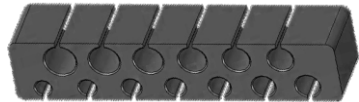


INSTRUMENTS FOR ACL-PCL SYSTEM



Tunnel Plug

Part No. J506000000



Graft Sizing Block

Part No. J579000000



Rasp 20° Bend

Part No. J565001000 Up
 J565002000 Down



Cannulated Screw Driver

Part No. J564001000



Transtibial Femoral ACL Guide

| Part No. | Size |
|------------|------|
| J509001000 | 5 mm |
| J509002000 | 6 mm |
| J509003000 | 7 mm |



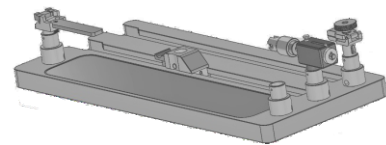
Transportal ACL Guide

| Part No. | Size |
|------------|------|
| J504001000 | 5 mm |
| J504002000 | 6 mm |
| J504003000 | 7 mm |



Container for ACL-PCL Instrument Set

Part No. HA01001000



Graft Preparation Workstation

Part No. J507001000



Container for ACL PCL Graft Preparation Set

Part No. HA01301000

INSTRUMENTS FOR SHOULDER

Instrument Set for Shoulder



Open Awl

Part No.
J600001000
J601001000

Size
Dia 4.8mm
Dia 5.5 & 6.5mm



Awl Dilator

Part No.
J602001000
J603001000

Size
4.5mm
5.5mm



Impactor

Part No. J604001000



Rasper

Part No.
J605001000
J606001000

Round
Sharp



Elevator

Part No. J607001000



Suture Grasper

Part No. J608001000



Hammer

Part No. J609001000



Open Needle

Part No.
J610000000
J611000000

Size
Small
Big



Probe

Part No. J612000000



Round Guide Wire 4.3

Part No. J613000000



Drill Bit Dia 1.8mm

Part No. J614001000



Drill Sleeve

Part No.
J615001000
J616001000

Dia 6mm-3.5mm
Dia 6mm-5mm



Knot Pusher

Part No. J617001000



Suture Hook L 30 Deg.

Part No. J618001000



Suture Hook R 30 Deg.

Part No. J620001000



Suture Hook L 70 Deg.

Part No. J619001000



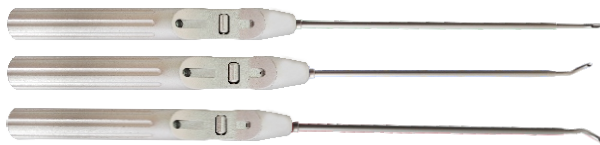
Suture Hook R 70 Deg.

Part No. J621001000



Suture Hook L & R 20 Deg.

Part No. J622001000



Suture Grasper

Part No.

J623001000 90 Deg.
 J624001000 L - 30 Deg.
 J625001000 R - 30 Deg.



Suture Grasper

Part No. J626001000



Suture Grasper

Part No.
 J627001000 Right
 J628001000 Left



Suture Cutter

Part No. J629001000



Rongeur

Part No. J630001000



Tissue Grasper

Part No. J631001000



Container for Shoulder Instrument Set

Part No. HA04501000

Note:

Shoulder systems are sold together as an assembly of implant, suture & inserter.

- Inserter is single use only.

INSTRUMENTS FOR LIGAMENT STAPLE & SPIKED WASHER

Instrument set for Ligament Staple & Spiked Washer



Staple Driver

Part No. J580001000



Elevator for Staple Removal

Part No. J581000000



Slap Hammer/Extractor

Part No. J582001000



Staple Seating Punch

Part No. J583000000



Drill for Low Profile Cancellous Screw. 25mm

Part No. J584000000



2.5mm Drill for Bi-Cortical Post

Part No. J585000000



Tap for Bi-Cortical Post

Part No. J586000000



Non cannulated Short Screwdriver Shaft, 2.5 x 170mm

Part No. 587000000



Simple Cannulated T Quick Coupling (Square Shaft)

Part No. BA15001000



Depth Gauge for 2.7mm to 4mm Screws

Part No. A778001000



Container for Ligament Staple & Spiked Washer Instrument set

Part No. HA04201000